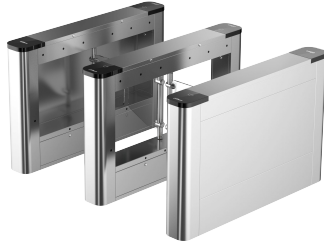


DHI-ASGB510Y-R

DHI-ASGB510Y-R Dahua Swing Barrier(Right,No hole,Outdoor) DHI-ASGB510Y-R



Series Overview

The Swing Barrier is used to help manage and regulate the people that access an area. It records data on people who enter and exit, and supports unlocking through face recognition, card swipe, scanning the QR code and more. This barrier is ideal for use in office buildings, banks, hospitals, commercial compounds, tourist attractions, schools, communities and more.

Scene

Suitable for access control of entrances and exits in communities,schools,factories,parks,office building and more.

Technical Specification

System	
Main Processor	Embedded Processor
Basic	
Product Type	Swing Barrier
Motor	Brushless DC motor
Status Indicator Light	Three color indicator lights
Voice Prompt	Yes
Casing Material	SUS304
Function	
Online Update	Yes
Performance	
MCBF	≥ 5 million times
Card Reading Distance	0 cm–3 cm (0"–1.18")

- 304 stainless steel cabinet with a thickness of 1.2 mm.
- Anti-collision.
- Restores the system settings to their default values.
- Offers the mechanical and IR anti-squeeze functions.
- Supports second authentication, and memorizing passing data for entry and exit.
- Automatically opens the barrier in a fire
- Offers 4 security level modes that are suitable for different scenes.
- Features 9 modes for entry and exit including controlled, prohibited, and free. Combine these modes for more options.
- Supports configuring the speed it opens and closes, passing time for people, and delaying the closing time.
- The sound and light alarms are triggered when the system detects events such as intrusion, tailing, reverse intrusion, staying in area, abnormal unlock, jumping the barrier, barrier failure, and IR fault.
- Uses a DC Brushless servo motor.
- MCBF (Mean Cycles between Failures) is no less than 5,000,000 times.
- 12 pairs of IR detectors.
- Supports being connected to multiple types of modules such as face, fingerprint and QR code. Combine these modules for more options.
- Comes with an energy storage capacitor. When the device is turned off, the arm automatically opens.
- Comes with stainless steel arms that form a passage with a width of 600 mm.
- The heating module can be purchased separately to withstand low temperatures between -40°C and -25°C (-40°F to -13°F).

Max Custom Passage Width	Acrylic:1100 mm (43.31");Stainless steel:1100 mm (43.31")
Input Port	RS-232 serial port
Passing Speed	20–60 people/minute
Unlock/Lock Speed	≥0.5 s
Pairs of IR Detectors	12 pairs
Cabinet Thickness	1.2 mm (0.05")
Top Cover Thickness	1.2 mm (0.05")
Barrier Material	Acrylic/Stainless steel
Number of Face Module Installation Holes	0

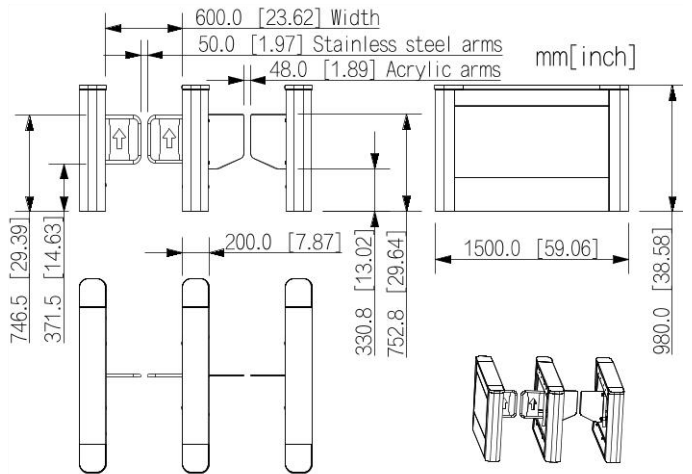
Swing Barrier | DHI-ASGB510Y-R

Number of Access Controllers	1
Card Swiping	Yes
Capacity	
User Capacity	100000
Card Capacity	100000
Record Capacity	100000
Port	
Network Port	1 × 10/100 Mbps self-adaptive Ethernet port
General	
Vandal-proof Rating	IK06, IK08
Power Supply	100–240 VAC, 1.5 A
Protection	IPX4
Power Consumption	≤10 W (standby), ≤130 W (working)
Product Dimensions	1,500 mm × 200 mm × 980 mm (59.06" × 7.87" × 38.58")
Module Protruding Size	0 mm
Packaging Dimensions	1,630 mm × 330 mm × 1,120 mm (64.73" × 12.99" × 44.09")
Gross Weight	80 kg ± 2.5 kg (187.40 lb ± 5.51 lb)
Operating Temperature	–25 °C to +70 °C (–13 °F to + 158 °F)
Operating Humidity	5%–90% (RH), non-condensing
Operating Environment	Indoor;outdoor
Storage Temperature	0 °C to +40 °C (+32 °F to + 104 °F)
Storage Humidity	30%–75% (RH), non-condensing

Ordering Information

Type	Model	Description
Swing Barrier	DHI-ASGB510Y-R	DHI-ASGB510Y-R Dahua Swing Barrier(Right,No hole,Outdoor) DHI-ASGB510Y-R

Dimensions (mm[inch])



Application

