

English

1 APPEARANCE

- Indicator
- Extension Cable
- Tamper Button
- Probe
- Learn button

2 ENROLLMENT

3 INSTALLATION

- Check signal strength.
- Install the detector.
 - Stand mounting
 - Wall mounting

4 TEST

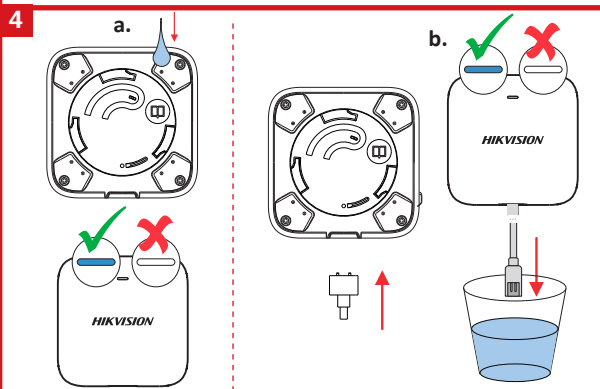
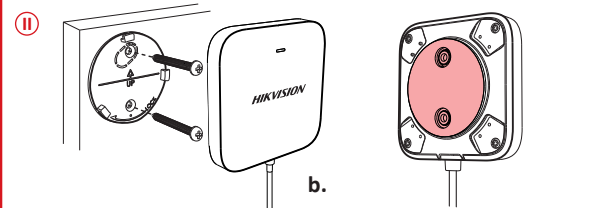
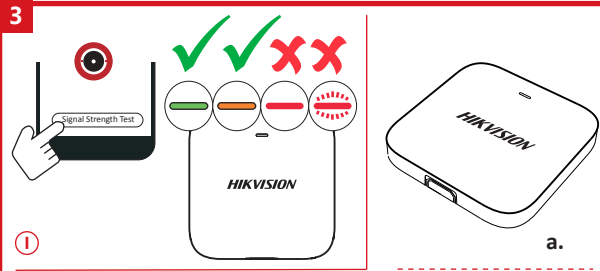
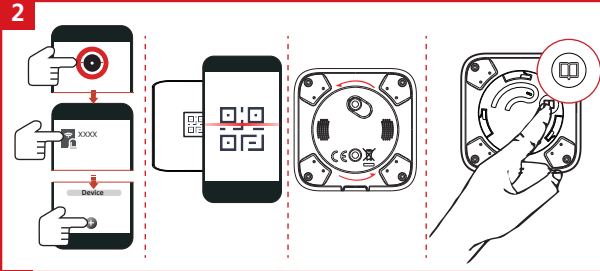
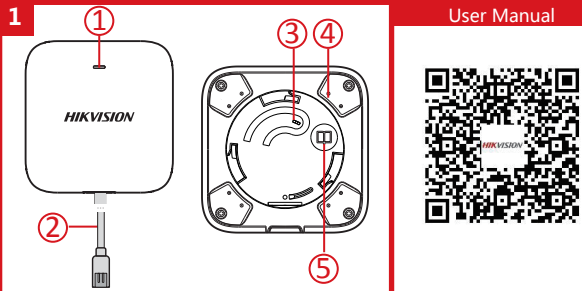
- Stand mounting test
- Wall mounting test

User Manual

Scan the QR code for more information and operation help.

Specification

Installation	Wall mount/Direct touch
Tamper protection	Front & Back
LED indicator	Blue (alarm)
Operating temperature	-10 °C to 55 °C (14 °F to 131 °F) -10 °C to 40 °C (14 °F to 104 °F) EN Certified
Storage temperature	-20 °C to 60 °C (-4 °F to 140 °F)
Operating humidity	10% to 90%
Water protection	IP68
Dimension (H x W x D)	62.4 mm x 62.4 mm x 14.6 mm
Weight	85.5 g
Transmission frequency	868MHz
RF range	1.2Km (free space)
Battery	CR2450 x 1 (included)
Standard battery life	3 years



User Manual



Français

1 ASPECT

- Voyant
- Câble de rallonge
- Contact de sabotage
- Sonde
- Bouton d'apprentissage

2 ENREGISTREMENT

3 INSTALLATION

- Vérifiez la puissance du signal.
- Installez le détecteur.
 - Montage sur pied
 - Montage mural

4 TEST

- Test du montage sur pied
- Test du montage mural

Manuel d' utilisation

Scannez le code QR pour obtenir plus d'informations ainsi qu'une aide concernant le fonctionnement de l'appareil.

Spécification

Installation	Montage mural/Contact direct
Protection anti-sabotage	Avant et arrière
Indicateur LED	Bleu (alarme)
Température de fonctionnement	-10 à 55 °C -10 à 40 °C (EN certifié)
Température de stockage	De -20 °C à 60 °C
Humidité de fonctionnement	10 à 90 %
Indice de protection d'étanchéité	IP68
Dimension (L x l x h)	62,4 x 62,4 x 14,6 mm
Poids	85,5 g
Fréquence de transmission	868 MHz
Plage RF	1,2 km (espace dégagé)
Batterie	1 pile bouton CR2450 (fournie)
Durée de vie standard de la pile	3 ans

Español

1 ASPECTO

- Indicador
- Cable alargador
- Botón anti-manipulación
- Sonda
- Botón de memoria

2 REGISTRO

3 INSTALACIÓN

- Comprobar la intensidad de la señal.
- Instale el detector.
 - Montaje en soporte
 - Montaje en pared

4 PRUEBA

- Prueba de montaje en soporte
- Prueba de montaje en pared

Manuale de usuario

Escanează el código QR para obtener más información y ayuda sobre el funcionamiento.

Especificación

Instalación	Montaje en pared/pulsación directa
Protección anti-manipulación	Anterior y posterior
Piloto led	Azul (alarma)
Temperatura de funcionamiento	-10 °C a 55 °C (14 °F a 131 °F) -10 °C a 40 °C (14 °F a 104 °F), con certificación EN
Temperatura de almacenamiento	-20 °C a 60 °C (-4 °F a 140 °F)
Humedad de funcionamiento	10 % a 90 %
Protección contra el agua	IP68
Dimensiones (alto x ancho x fondo)	62,4 mm x 62,4 mm x 14,6 mm
Peso	85,5 g
Frecuencia de transmisión	868 MHz
Alcance de radiofrecuencia	1,2 km (espacio abierto)
Batería	1 batería CR2450 (incluida)
Vida útil de la batería convencional	3 años

Deutsch

1 AUFBAU

- Statusanzeige
- Verlängerungskabel
- Sabotagetaste
- Sensor
- Lern Taste

2 REGISTRIERUNG

3 INSTALLATION

- Überprüfen Sie die Signalstärke.
- Installieren Sie den Melder.
 - Standmontage
 - Wandmontage

4 TEST

- Prüfung der Standmontage
- Prüfung der Wandmontage

Benutzerhandbuch

Scannen Sie den QR-Code für weitere Informationen und Bedienungsanleitungen.

Technische Daten

Installation	Wandmontage/Direkter Kontakt
Sabotageschutz	Vorder- und Rückseite
LED-Anzeige	Blau (Alarm)
Betriebstemperatur	-10 °C bis 55 °C -10 °C bis +40 °C EN-zertifiziert
Lagertemperatur	-20 °C bis +60 °C
Betriebsfeuchtigkeit	10 % bis 90 %
Wasserschutzart	IP68
Maße (H x B x T)	62,4 mm x 62,4 mm x 14,6 mm
Gewicht	85,5 g
Übertragungsfrequenz	868 MHz
Funkreichweite	1,2 km (offenes Gelände)
Akku	CR2450 x 1 (gehört zum Lieferumfang)
Standard-Batterielaufzeit	3 Jahre

Italiano

1 ASPETTO

- Indicatore
- Cavo di prolunga
- Pulsante manomissione
- Sonda
- Pulsante di associazione

2 REGISTRAZIONE

3 INSTALLAZIONE

- Controllare l'intensità del segnale.
- Installare il rilevatore.
 - Montaggio a staffa
 - montaggio a parete

4 TEST

- Pulsante montaggio staffa
- Test montaggio a parete

Manuale dell'utente

Per ulteriori informazioni e assistenza sull'utilizzo, scansionare il codice QR.

Specifiche

Installazione	Montaggio a parete/Direct touch
Protezione anti-manomissione	Anteriore e posteriore
Indicatore LED	Blu (allarme)
Temperatura operativa	Da -10 °C a 55 °C (da 14 °F a 131 °F)
Temperatura di conservazione	Da -10 °C a 40 °C (da 14 °F a 104 °F), certificazione EN
Umidità operativa	Da 10% a 90%
Grado di protezione dall'acqua	IP68
Dimensioni (A x L x P)	62,4 mm x 62,4 mm x 14,6 mm
Peso	85,5 g
Frequenza di trasmissione	868 MHz
Portata segnale RF	1,2 km (spazio disponibile)
Batteria	CR2450 x 1 (in dotazione)
Durata standard della batteria	3 anni

©2020 Hangzhou Hikvision Digital Technology Co., Ltd. All rights reserved.

About the Manual: The Manual includes instructions for using and managing the Product. Pictures, charts, images and all other information hereafter are for description and explanation only. The information contained in the Manual is subject to change without notice, due to firmware updates or other reasons. Please find the latest version of this Manual at the Hikvision website (<http://www.hikvision.com/>).

Use this Manual with the guidance and assistance of professionals trained in supporting the Product. Hikvision and its subsidiaries' trademarks and logos are the properties of Hikvision in various jurisdictions. Other trademarks and logos mentioned are the properties of their respective owners.

TO THE MAXIMUM EXTENT PERMITTED BY APPLICABLE LAW, THIS MANUAL AND THE PRODUCT DESCRIBED, WITH ITS HARDWARE, SOFTWARE AND FIRMWARE, ARE PROVIDED "AS IS" AND "WITH ALL FAULTS AND DEFECTS". HIKVISION MAKES NO WARRANTIES, EXPRESS OR IMPLIED, INCLUDING OF THE MERCHANTABILITY, FITNESS FOR A PARTICULAR PURPOSE OR NON-INFRINGEMENT. HIKVISION IS LIABLE TO YOU FOR ANY SPECIAL, CONSEQUENTIAL, INCIDENTAL OR INDIRECT DAMAGES, INCLUDING: LAMINATING OTHERS, DAMAGES TO OTHERS' PROFITS, BUSINESS INTERRUPTION, LOSS OF DATA, CORRUPTION OF SYSTEMS, OR PRODUCT DEFECTS OR LOSS, WHICH THE BASIS OR INDEMNIFY CONTRACT, BUILT INTO SUCH CONTRACTS, HAS BEEN REVIEWED AND ACCEPTED BY YOU AT THE TIME OF PURCHASE OF THE PRODUCT, EVEN IF HIKVISION HAS BEEN ADVISED OF THE POSSIBILITY OF SUCH DAMAGES OR LOSS.

YOU ACKNOWLEDGE THAT THE NATURE OF THE INTERNET PROVIDES FOR INHERENT SECURITY RISKS, AND HIKVISION SHALL NOT BE RESPONSIBLE FOR ANY LOSS OF DATA, INFORMATION, OR OTHER INFORMATION SECURITY RISKS, HOWEVER, HIKVISION WILL PROVIDE TIMELY TECHNICAL SUPPORT IF REQUESTED.

PLEASE READ AND UNDERSTAND THE FOLLOWING INFORMATION: FOR ADDITIONAL LAWS, AND YOU ARE SOLELY RESPONSIBLE FOR INCLUDING THAT YOU USE CONFORMS TO THE APPLICABLE LAW, ESPECIALLY YOU ARE RESPONSIBLE FOR USING THE PRODUCT IN A MANNER THAT DOES NOT VIOLATE OR INFRINGE ON THE RIGHTS OF THIRD PARTIES INCLUDING: PATENT RIGHTS, COPYRIGHT RIGHTS, TRADEMARK RIGHTS, PROPRIETY RIGHTS, OR DATA PROTECTION AND OTHER PRIVACY RIGHTS. YOU SHALL NOT USE THIS PRODUCT FOR ANY PROHIBITED END-USES, INCLUDING THE DEVELOPMENT OR PRODUCTION OF WEAPONS OF MASS DESTRUCTION, THE DEVELOPMENT OR PRODUCTION OF BIOLOGICAL WEAPONS, AND ACTIVITIES IN THE CONTEXT RELATED TO ANY NUCLEAR EXPLOSIVE OR UNSAFE NUCLEAR FUEL CYCLE, OR IN SUPPORT OF HUMAN RIGHTS ABUSES.

IN THE EVENT OF ANY CONFLICTS BETWEEN THIS MANUAL AND THE APPLICABLE LAW, THE LATTER PREVAILS.

This product and, if applicable, the supplied accessories are marked with "CE" and comply therefore with the 2006/95/EC (Low Voltage Directive), 2014/53/EU (Radio Equipment Directive) under the RE Directive 2011/65/EU, the EMC Directive 2012/19/EU (WEEE directive). Products marked with this symbol cannot be disposed of as unsorted municipal waste in the European Union. For proper recycling, return this product to your local supplier upon the purchase of equivalent new equipment, or dispose of it at designated collection points. For more information see: www.recycling.eu

2006/66/EC (Battery directive). This product contains a battery that cannot be disposed of as unsorted municipal waste in the European Union. For proper recycling, return this product to your local supplier upon the purchase of equivalent new equipment, or dispose of it at designated collection points. For more information see: www.recycling.eu

BATTERY WARNING
1. Do not ingest battery. Chemical Burn Hazard
2. Keep new and used batteries away from the children.
3. If the battery compartment does not close securely, stop using the product and keep it away from children.
4. This product contains a coin / button cell battery, if the coin / button cell battery is swallowed, it can cause severe internal burns in just 2 hours and lead to death.
5. If you think batteries might have been swallowed or placed inside any part of the body, seek immediate medical attention.

BATTERY CAUTION
1. Risk of fire or explosion if the battery is replaced by an incorrect type.
2. Improper replacement of the battery with an incorrect type may affect a safeguard (for example, in the case of some lithium battery types).
3. Do not dispose of the battery into fire or hot ovens, or mechanically crush or cut the battery, which may result in an explosion.
4. Do not leave the battery in an extremely high temperature surrounding environment, which may result in an explosion or the leakage of flammable liquid or gas.
5. Do not subject the battery to extremely low air pressure, which may result in an explosion or the leakage of flammable liquid.
6. Dispose of used batteries according to the instructions.
7. The equipment is not suitable for use in locations where children are likely to be present.

INSTALLATION CAUTION
The additional force shall be equal to three times the weight of the equipment but not less than 50N. The equipment and its associated mounting means shall remain secure during the installation. After the installation, the equipment, including any associated mounting plate, shall not be damaged.

This equipment is not suitable for use in locations where children are likely to be present.

Türkçe

1. GÖRÜNÜM

1. Göstergesi 2. Uzatma Kablosu 3. Kurulumla Düşmesi 4. Prób
5. Öğrenme düşmesi

2. KAVIT

3. KURULUM

- I. Sinyal gücünü kontrol edin.
- II. Dedektörün taktın.
 - a. Stanta montaj
 - b. Duvara montaj
 1. vida ile
 2. sünger bant ile

4. TEST

- a. Stant montaj testi
- b. Duvar montaj testi

Kullanım Kılavuzu

Daha fazla bilgi ve çalışırma yardımı için QR kodunu tarayın.

Özellikler

Kurulum	Duvara montaj/Düğünan dokunmatik
Kurulumca koruması	On ve Arka
LED göstergesi	Mavi (alarm)
Çalışma sıcaklığı	-10 °C ila 55 °C (14 °F ila 131 °F)
	-10 °C ila 40 °C (14 °F ila 104 °F) EN Sertifikalı
Depolama sıcaklığı	-20 °C ila 60 °C (-4 °F ila 140 °F)
Çalışma nemi	%10 ila %90
Su koruması	IP68
Boyut (Y x G x D)	62,4 mm x 62,4 mm x 14,6 mm
Ağırlık	85,5 g
iletin frekansı	868 MHz
RF aralığı	1,2 km (boş alan)
PII	CR2450 x 1 (dahil)
Standart pil ömrü	3 yıl

© 2020 Hangzhou Hikvision Digital Technology Co., Ltd. Todos los derechos reservados.

Zobor este navadno vključuje inštrukcije o obilježju in uporabi tega proizvoda. Če želite prebrati, preglejte in shranite vse informacije, ki vam bodo koristne pri uporabi tega proizvoda. Če želite prebrati, preglejte in shranite vse informacije, ki vam bodo koristne pri uporabi tega proizvoda. Če želite prebrati, preglejte in shranite vse informacije, ki vam bodo koristne pri uporabi tega proizvoda.

© 2020 Hangzhou Hikvision Digital Technology Co., Ltd. Todos los derechos reservados.

Zobor este navadno vključuje inštrukcije o obilježju in uporabi tega proizvoda. Če želite prebrati, preglejte in shranite vse informacije, ki vam bodo koristne pri uporabi tega proizvoda. Če želite prebrati, preglejte in shranite vse informacije, ki vam bodo koristne pri uporabi tega proizvoda. Če želite prebrati, preglejte in shranite vse informacije, ki vam bodo koristne pri uporabi tega proizvoda.

© 2020 Hangzhou Hikvision Digital Technology Co., Ltd. Todos los derechos reservados.

Zobor este navadno vključuje inštrukcije o obilježju in uporabi tega proizvoda. Če želite prebrati, preglejte in shranite vse informacije, ki vam bodo koristne pri uporabi tega proizvoda. Če želite prebrati, preglejte in shranite vse informacije, ki vam bodo koristne pri uporabi tega proizvoda. Če želite prebrati, preglejte in shranite vse informacije, ki vam bodo koristne pri uporabi tega proizvoda.

© 2020 Hangzhou Hikvision Digital Technology Co., Ltd. Todos los derechos reservados.

© 2020 Hangzhou Hikvision Digital Technology Co., Ltd. Todos los derechos reservados.

© 2020 Hangzhou Hikvision Digital Technology Co., Ltd. Todos los derechos reservados.

© 2020 Hangzhou Hikvision Digital Technology Co., Ltd. Todos los derechos reservados.

Русский

1. ВНЕШНИЙ ВИД

1. Индикатор 2. Кабельный удлинитель 3. Кнопка датчика взлома
4. Датчик 5. Кнопка обучения

2. РЕГИСТРАЦИЯ

3. УСТАНОВКА

- I. Проверьте уровень сигнала.
- II. Установите датчик.
 - a. Монтаж в стойке
 - b. Настенный монтаж
 1. С помощью винтов 2. С помощью губчатой ленты

4. ИСПЫТАНИЕ

- a. Тестирование монтажа в стойке
- b. Тестирование настенного монтажа

Руководство пользователя

Для получения дополнительной информации и ознакомления с руководством по эксплуатации отсканируйте QR-код.

Технические данные

Установка	Настенное крепление/непрямое настенное крепление
Светоотражающий индикатор	Полупрозрачные и прозрачные панели
Светодиодный индикатор	Синий (тревога)
Рабочая температура	от -10 °C до 55 °C
	от -10 °C до 40 °C, сертификация EN
Температура при хранении	от -20 °C до 60 °C
Рабочая влажность	10-90%
Водонепроницаемость	IP68
Размеры (B x Ш x Г)	62,4 x 62,4 x 14,6 мм
Вес	85,5 г
Частота передачи	868 МГц
Дальность действия РЧ-канала	1,2 км (на открытом пространстве)
Батарея	CR2450, 1 шт. (включается)
Стандартный срок службы батареи	3 года

© 2020 Hangzhou Hikvision Digital Technology Co., Ltd. Todos los derechos reservados.

A questo proposito si consiglia di leggere attentamente il manuale di istruzioni.

© 2020 Hangzhou Hikvision Digital Technology Co., Ltd. Todos los derechos reservados.

© 2020 Hangzhou Hikvision Digital Technology Co., Ltd. Todos los derechos reservados.

© 2020 Hangzhou Hikvision Digital Technology Co., Ltd. Todos los derechos reservados.

© 2020 Hangzhou Hikvision Digital Technology Co., Ltd. Todos los derechos reservados.

© 2020 Hangzhou Hikvision Digital Technology Co., Ltd. Todos los derechos reservados.

© 2020 Hangzhou Hikvision Digital Technology Co., Ltd. Todos los derechos reservados.

© 2020 Hangzhou Hikvision Digital Technology Co., Ltd. Todos los derechos reservados.

© 2020 Hangzhou Hikvision Digital Technology Co., Ltd. Todos los derechos reservados.

© 2020 Hangzhou Hikvision Digital Technology Co., Ltd. Todos los derechos reservados.

© 2020 Hangzhou Hikvision Digital Technology Co., Ltd. Todos los derechos reservados.

© 2020 Hangzhou Hikvision Digital Technology Co., Ltd. Todos los derechos reservados.

© 2020 Hangzhou Hikvision Digital Technology Co., Ltd. Todos los derechos reservados.

© 2020 Hangzhou Hikvision Digital Technology Co., Ltd. Todos los derechos reservados.

© 2020 Hangzhou Hikvision Digital Technology Co., Ltd. Todos los derechos reservados.

© 2020 Hangzhou Hikvision Digital Technology Co., Ltd. Todos los derechos reservados.

© 2020 Hangzhou Hikvision Digital Technology Co., Ltd. Todos los derechos reservados.

© 2020 Hangzhou Hikvision Digital Technology Co., Ltd. Todos los derechos reservados.

© 2020 Hangzhou Hikvision Digital Technology Co., Ltd. Todos los derechos reservados.

© 2020 Hangzhou Hikvision Digital Technology Co., Ltd. Todos los derechos reservados.

© 2020 Hangzhou Hikvision Digital Technology Co., Ltd. Alle Rechte vorbehalten.

A questo proposito si consiglia di leggere attentamente il manuale di istruzioni.

© 2020 Hangzhou Hikvision Digital Technology Co., Ltd. Alle Rechte vorbehalten.

© 2020 Hangzhou Hikvision Digital Technology Co., Ltd. Alle Rechte vorbehalten.

© 2020 Hangzhou Hikvision Digital Technology Co., Ltd. Alle Rechte vorbehalten.

© 2020 Hangzhou Hikvision Digital Technology Co., Ltd. Alle Rechte vorbehalten.

© 2020 Hangzhou Hikvision Digital Technology Co., Ltd. Alle Rechte vorbehalten.

© 2020 Hangzhou Hikvision Digital Technology Co., Ltd. Alle Rechte vorbehalten.

© 2020 Hangzhou Hikvision Digital Technology Co., Ltd. Alle Rechte vorbehalten.

© 2020 Hangzhou Hikvision Digital Technology Co., Ltd. Alle Rechte vorbehalten.

© 2020 Hangzhou Hikvision Digital Technology Co., Ltd. Alle Rechte vorbehalten.

© 2020 Hangzhou Hikvision Digital Technology Co., Ltd. Alle Rechte vorbehalten.

© 2020 Hangzhou Hikvision Digital Technology Co., Ltd. Alle Rechte vorbehalten.

© 2020 Hangzhou Hikvision Digital Technology Co., Ltd. Alle Rechte vorbehalten.

© 2020 Hangzhou Hikvision Digital Technology Co., Ltd. Alle Rechte vorbehalten.

© 2020 Hangzhou Hikvision Digital Technology Co., Ltd. Alle Rechte vorbehalten.

© 2020 Hangzhou Hikvision Digital Technology Co., Ltd. Alle Rechte vorbehalten.

© 2020 Hangzhou Hikvision Digital Technology Co., Ltd. Alle Rechte vorbehalten.

© 2020 Hangzhou Hikvision Digital Technology Co., Ltd. Alle Rechte vorbehalten.

© 2020 Hangzhou Hikvision Digital Technology Co., Ltd. Alle Rechte vorbehalten.

© 2020 Hangzhou Hikvision Digital Technology Co., Ltd. Alle Rechte vorbehalten.

