



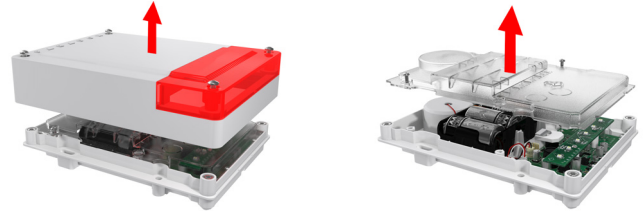
### Lenses



## Installation

Only qualified persons should install, operate, maintain, and repair this equipment.

1. Write down the serial number (on the back of the unit) and location of the SR250 for later reference, to insert into the Paradox BabyWare software.
2. Loosen the four screws from the cover from the siren and remove cover.
3. Loosen the four screws from the PCB cover and remove.



4. Screw the SR250 siren onto the wall through the five provided holes (four wall and one Tamper Spacer).
5. Ensure that the Tamper switch is screwed onto the wall through the Tamper Spacer.
6. Batteries:
  - a. If the siren already has batteries installed:
    - Remove the plastic tab between the top battery terminals and the battery compartment
    - Leave the cover off until you learn the siren
  - b. If the siren does not have batteries installed:
    - Insert the batteries - ensure correct polarity
    - Leave the cover off until you learn the siren
- Note:** We recommend to replace the battery every three years to avoid leakage.
7. After programming the siren (see Programming section): Reinstall the PCB cover.
8. Reinstall the top cover.

## LED Feedback



Figure 2: LED Status Indicators

The following table describes LED Status Indicators.

LED Indicator	Description/Status
TX	Sending data
RX	Receiving data
PSSI	Signal strength siren receives from control panel Flash 4x - strong signal Flash 3x - good signal Flash 2x - weak signal Flash 1x - very weak signal (relocate) No flash - no signal
Status	Flash once/sec. - processor is on Flash once/4 sec. - power save mode

## Introduction

The SR250 is a weatherproof, stand-alone, fully supervised outdoor wireless siren with built-in strobe light and wireless transceiver. The SR250 uses 2-way wireless communication, which provides continuous supervision between the panel and siren with fast response to alarm signals within four seconds. With its tough weatherproof construction, the SR250 operates reliably from -30 °C to 50 °C (-22 °F to 122 °F) when using alkaline batteries or power supply.

With normal use, the SR250 will function up to 3 years without the need to replace the batteries (battery life can be extended by using an optional AC or DC power supply). This guide describes how to install and configure the SR250 wireless siren.

## Overview

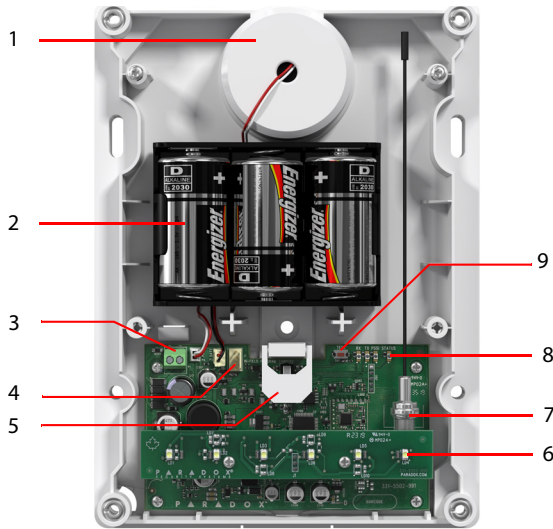


Figure 1: SR250 Overview

Number	Overview Description
1	100 dB siren
2	Battery pack (3 "D" size alkaline batteries) <i>For EN installations, 3 "D" batteries must be installed.</i>
3	Power supply input (8-16 Vac / 9-20 Vdc)
4	Infield connector
5	Dual-action tamper switch (detects when cover is removed and when unit is removed from wall)
6	Strobe lights
7	Antenna (Can be extended using an RG6 or RG59 coaxial cable with standard male F connectors. Attach the antenna using a female/female F adapter)
8	Status and Signal Strength LEDs
9	Learn switch

## Programming

Program the SR250 either through a supported keypad or through BabyWare software (BabyWare).

### Programming with Keypads

Feature	Program		
	MG6250	MG/SP	EVO192/HD (requires RTX3)
	Sections correspond to sirens 1 - 4. EXAMPLE: [0802]: Learn Siren 2 for MG6250		Sections correspond to sirens 1 - 8
<b>Learn Siren</b>	[0801] - [0804]	[683] - [686]	[2851] - [2858]
	Press and hold the <b>Learn</b> switch for 3 seconds after entering the section to learn the siren. <b>WARNING:</b> When pressing the Learn switch, the SR250 squawks and the strobe light flashes five times to confirm siren registration to the panel		
<b>Assign Partition to Siren</b>	-	-	[2861] - [2868]
<b>Display Signal Strength</b>	[0801] - [0804]	[687] - [690]	[2871] - [2878]
	Press and hold the <b>Learn</b> switch for 3 seconds after entering the section to display the siren signal strength that the panel receives. Requires keypad K32LCD+ V1.3 or higher		
<b>Label Siren</b>	[0811] - [0814]	[691] - [694]	-
	Labels identify sirens when reporting events (for MG/SP only: via e-mail through the IP150+. For MG6250 through SMS personal reporting) and for troubleshooting purposes. Maximum 16 characters		
<b>Temporary Tamper Switch Deactivation for Maintenance</b>	[0800]	[695]	[2870]
	Press <b>[ENTER]</b> after entering the section to deactivate tamper alarm until the cover is reinstalled or after 30 minutes		
<b>Panel Supervision of Siren</b>	[0820]	[587]	-
	<b>ON:</b> Enabled (default) <b>OFF:</b> Disabled		
	The control panel supervises the presence of the SR250. If lost, the control panel follows global supervision options set in the control panel		

### Programming with BabyWare

1. Open BabyWare > Connect your Account.
2. In the Main window: Select the **Add Item** button > **Wireless Sirens**.
3. Fill-in the SR250 label, location and serial number.
4. Select **Save**.

## Upgrading Firmware

Upgrade SR250 firmware through the Paradox InField software (V5.5.9 or higher) using the 307USB Direct Connect Interface. The SR250 requires the batteries installed in order to upgrade the firmware.

**Note:** Ensure that the SR250 is awake before upgrading the firmware.  
**To wake up the siren:** press the Learn switch (see #9 in **Figure 1**). The siren provides a 60 second delay in order to begin the update.

1. Remove the front cover as well as the PCB cover.
2. Connect the 307USB to the InField connector (see #4 in **Figure 1**).
3. Upgrade according to the firmware upgrade instructions: Go to [www.paradox.com](http://www.paradox.com) > Software > InField Firmware Upgrade Instructions.

## Tamper Supervision

If a tamper is detected, the SR250 will sound an alarm and the strobe light will flash for 4 minutes. The control panel will follow the global supervision options set in the panel.

## Specifications

Specification	Description
Power	4.5 Vdc (3 "D" size alkaline batteries) Optional: 8-16 Vac / 9-20 Vdc external power
Battery life	Up to 3 years based on normal use (e.g., 2 alarms per year with strobe for 2.5 hours and 8 squawks per day at an average of 25 °C (77 °F)). Using optional power source will extend battery life
Low Battery Voltage Signal	Signal sent at 3.4 Vdc
Consumption	Sleep: 22 uA, Standby: 130 uA, Alarm: 550 mA
RF frequency	433 MHz or 868 MHz
Siren	100 dB (1 meter) <i>For EN, maximum sound duration should be set to 4 minutes</i>
Siren Type	Type X / Type W
Dimensions	24 x 6 x 18 cm (9.5 x 2.3 x 7 in.)
Operating Temperature	Battery only: -30 °C to 50 °C (-22 °F to 122 °F)
RF range	70m (229 ft)
Certification	EN 50131-4, EN 50131-1 Grade 2, EN 50130-5 Environmental Class IV, CE IP Rating: IP54 Certification Body: Aplica Test and Certification
<i>Please use only safety approved power supply according to IEC/EN 60950-1 or 62368-1 with rated voltage of 8-16 Vac or 9-20 Vdc and rated current of 2A max.</i>	

## Warranty

For complete warranty information on this product, please refer to the Limited Warranty Statement found on the Statement. Your use of the Paradox product signifies your acceptance of all warranty terms and conditions. Please ensure that your use of the Paradox product is in compliance with local, national, and international laws.

© 2021 Paradox Security Systems (Bahamas) Ltd. All rights reserved. Specifications may change without prior notice. US, Canadian and international patents may apply. BabyWare and Paradox are a trademarks or registered trademarks of Paradox Security Systems (Bahamas) Ltd. or its affiliates in Canada, the United States and/or other countries.

